

Alpaca Health Management: Practices and Conditions

Chapter Six, Resource Handbook



Warren County Camelid Club

March 2022

ALPACA HEALTH *PRACTICES*

- **Health Maintenance Program**
 - **Herd Health Records**
 - **Disease prevention**
 - **Vaccination program**
 - **Parasite control**
 - **Foot care**
 - **Dental care**

HERD HEALTH RECORDS

| NORTH POHL LLC | | dba NORTH POHL FARM | | | | |
|------------------|---------------------|---|--------------------|---------------|-------|--------|
| ALPACA RECORD | | 1834 Greentree Rd., Lebanon, Ohio 45036 | | | | |
| Name: | BROWNIE | | | | | |
| Breed: | Huacaya | male | | | | |
| API certificate | Heatherbrook's Kane | | | | | |
| DOB | July 11, 2009 | | | | | |
| color | light brown | 209 light brown | | | | |
| API registry # | 31013642 | Huacaya | | | | |
| m-chip | 985121016283618 | | | | | |
| | | | | | | |
| Date | Category | Procedure | Drug | Via | Dose | Weight |
| April 28, 2018 | herd health | shearing, nails clipped | annual CDT | SQ injection | 2.5cc | |
| May 26, 2018 | herd health | worming | Dectomax | SQ injection | 2.5cc | |
| July 24, 2018 | herd health | worming | Ivermectin | SQ injection | 2.5cc | |
| July 24, 2018 | herd health | insect repellent | Cylence cyfluthrin | pour on drops | 1oz | |
| July 24, 2018 | herd health | nails checked, clipped | | | | |
| August 24, 2018 | herd health | worming | Dectomax | SQ injection | 2.5cc | |
| October 11, 2018 | herd health | worming | Dectomax | SQ injection | 2.5cc | |
| Jan 30 2019 | herd health | nails checked, clipped | | | | |
| April 26, 2019 | herd health | shearing, no fighting teeth, nails, CDT | Dectomax | SQ injection | 3.0cc | |
| July 23, 2019 | herd Health | worming | Ivermectin | SQ injection | 3.0cc | |

DISEASE PREVENTION

- **Keep a clean paddock**
- **Fly and pest control**
- **Unlimited clean, fresh water**
- **Appropriate nutrition**
 - **Unlimited quality hay or pasture**
 - **free choice mineral/ vitamin mix**
 - **Daily grain**

VACCINATION PROGRAM

- **CDT, annually** [clostridium types C, D; Tetanus]
- **Worming, year-round**
 - ***Ivermectin*, 30-day rotation**
 - ***Dectomax*, 45-day rotation**
 - ***Fenbendazole [Safeguard]*, “booster”**

PARASITE CONTROL

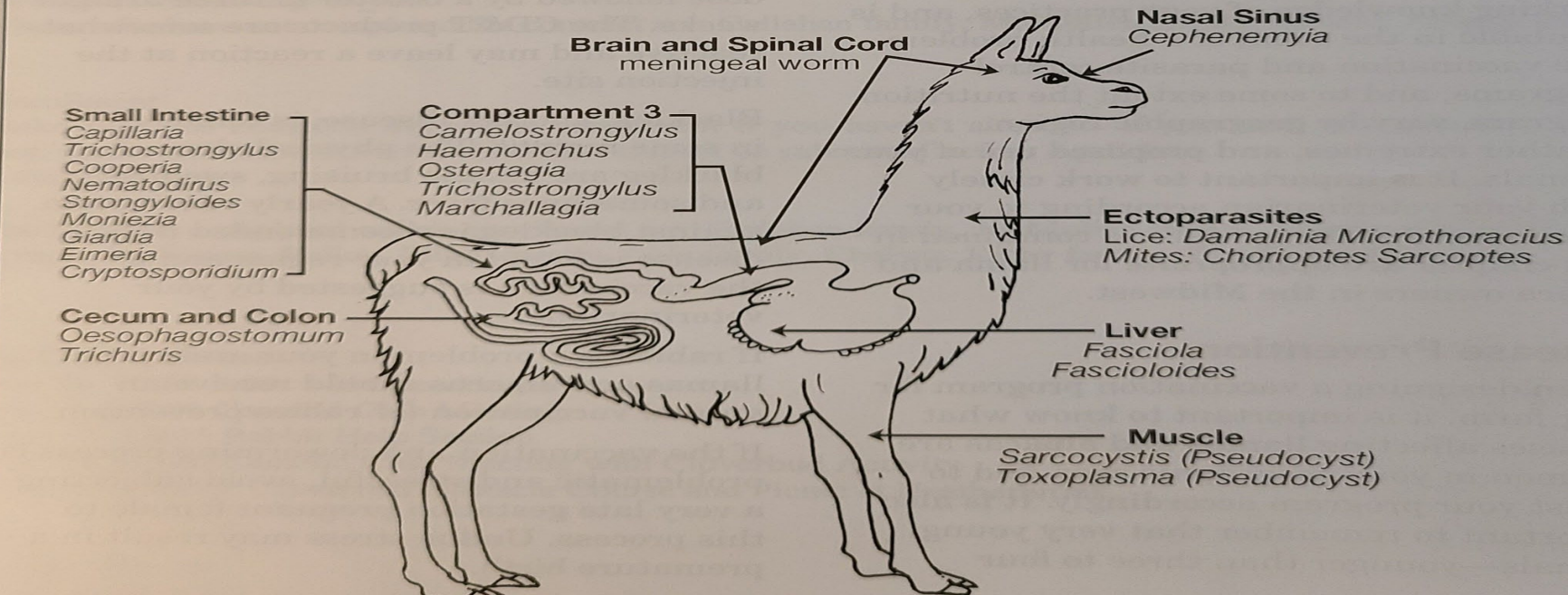
page 42

Common Parasites in Llamas and Alpacas

| Common/Scientific Name | Common Symptoms |
|--|--|
| Strongyles/ <i>Cooperia</i> , <i>Haemonchus</i> , <i>Ostertagia</i> | Most prevalent in llamas and alpacas. Diarrhea, stunted growth, emaciation. |
| Whipworm/ <i>Trichuris tenuis</i> | Poor growth, diarrhea. |
| Thin-necked intestinal worm/ <i>Nematodirus battus</i> , <i>N. helvetianus</i> | Common in llamas and alpacas. Poor growth, diarrhea. |
| Roundworm/Ascarid (Nematode) | Poor appetite, intermittent diarrhea/constipation or colic. Pot belly. |
| Tapeworm/ <i>Moniezia</i> sp. | Eggs can be difficult to detect in feces. May see worm segments in feces. Diarrhea, unthriftiness. |
| Coccidia/ <i>Eimeria</i> (Protozoan) | Ball Stool/diarrhea, common in young animals. |
| Liver Fluke/ <i>Fasciola hepatica</i> (Trematode) | Common in western states, chronic anemia. Requires fecal sedimentation test. |

Parasites of Llamas

Locations of Major Parasites



FOOT CARE

- **Nail Trim**

[watch for new video on WCCC web site]

- **Foot Rot**

in consistently wet areas

- **Dental Care**

annual grinding; male fighting teeth

ALPACA HEALTH *CONDITIONS*.....1

- Ringworm
- Zinc Responsive
- Dermatitis
- External parasites
- Mange Mites
- Neurological Issues

ALPACA HEALTH *CONDITIONS*.....2

- **Meningeal Worm**
- **Respiratory Problems**
- **Choanal Artesia**
- **Cleft palate**
- **Hyperthermia**
- **Digestive Issues**

ALPACA HEALTH *CONDITIONS*.....3

- **Enterotoxemia**
- **Coccidiosis**
- **Internal parasites**
- **Tooth infections**
- **Choke**
- **Gastric ulcers**