

Alpaca Feed Tag and Body Scoring Activity

Resource Handbook Chapter 7



Warren County Camelid Club

March 2022

A feed tag is required on all animal bulk feed sales and individually packaged feedbags.

The purpose of a feed tag is to help the animal owner choose the product having the correct ingredients, nutrients, and purpose.



Nutrena[®]

**COUNTRY FEEDS[®]
ALPACA
LIFE STAGES 14/5 (WO)**

(FOR RUMINANTS ONLY)

This pellet is designed for Breeding, Lactating and Growing Alpacas.

GUARANTEED ANALYSIS:

Crude Protein.....Min.	14.0 %
(This includes not more than 1.22% equivalent crude protein from non-protein nitrogen.)	
Crude Fat.....Min.	5.0 %
Crude Fiber.....Max.	15.0 %
Calcium...Min. 2.25 % Max.	2.75 %
Phosphorus.....Min.	1.5 %
Salt.....Min. 1.75 % Max.	2.25 %
Sodium...Min. 0.24 % Max.	0.74 %
Copper.....Min.	35 ppm
Selenium.....Min.	1.15 ppm
Zinc.....Min.	1,000 ppm
Vitamin A.....Min.	29,000 IU/LB
Vitamin D3.....Min.	14,000 IU/LB
Vitamin E.....Min.	900 IU/LB
Biotin.....Min.	9 mg/KG

INGREDIENTS:

Processed Grain By-Products, Forage Products, Roughage Products, Dicalcium Phosphate, Monocalcium Phosphate, Grain Products, Calcium Carbonate, Cane Molasses, Natural and Artificial Flavors Added, Soybean Oil, Ammonium Chloride, Salt, Hydrolyzed Animal and Vegetable Fat, Vitamin E Supplement, Sodium Selenite, Zinc Sulfate, Propionic Acid (a preservative), Biotin, Thiamine Mononitrate, Vitamin A Supplement, Vitamin D3 Supplement, Vitamin B12 Supplement, Riboflavin Supplement, Niacin Supplement, d-Calcium Pantothenate, Pyridoxine Hydrochloride, Folic Acid, Zinc Amino Acid Complex, Hydrolyzed Yeast, Yeast Extract, Plant Protein Products, FD & C Blue No. 1, Coconut Oil, Cobalt Glucoheptonate, Copper Lysine Complex, Manganese Methionine Complex, Zinc Methionine Complex, Bentonite, Petrolatum, Manganous Oxide, Ferrous Sulfate, Magnesium Oxide, Zinc Oxide, Ethylenediamine Dihydroiodide, Cobalt Carbonate, Potassium Chloride.

CAUTION: Use as directed

FEEDING DIRECTIONS: Each alpaca is genetically unique and should be fed to enhance desirable fiber and skeletal development. This feed is designed to be fed with hay and pasture. Amount of the feed offered depends on alpaca age, trimester of pregnancy, lactation and quality of forage fed free choice.

Growing crias, juveniles and yearlings: ½ LB per 100 LB body weight.
Pregnant females: ½ LB per 100 LB body weight.
Lactating females: ½ LB per 100 LB body weight.

Always provide alpaca with plenty of fresh clean water. No other trace mineral supplement or source should be made available while this product is being used.

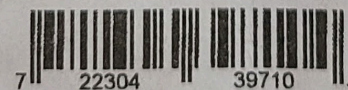
CAUTION: Do not feed to sheep – added copper.

NUTRENA
P.O. Box 5614
MINNEAPOLIS, MN 55440
www.nutrenaworld.com

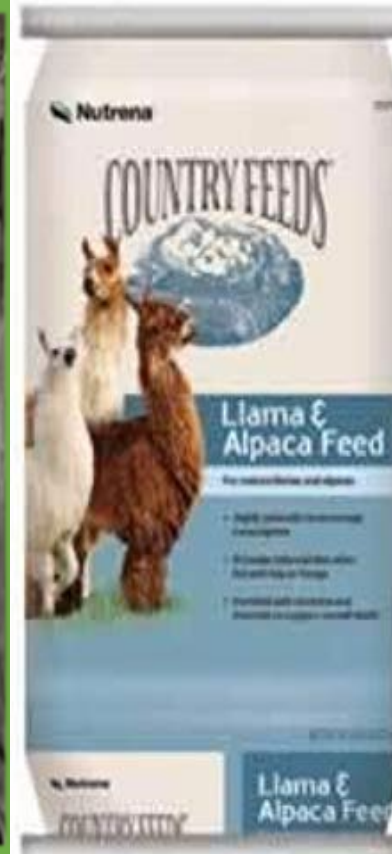
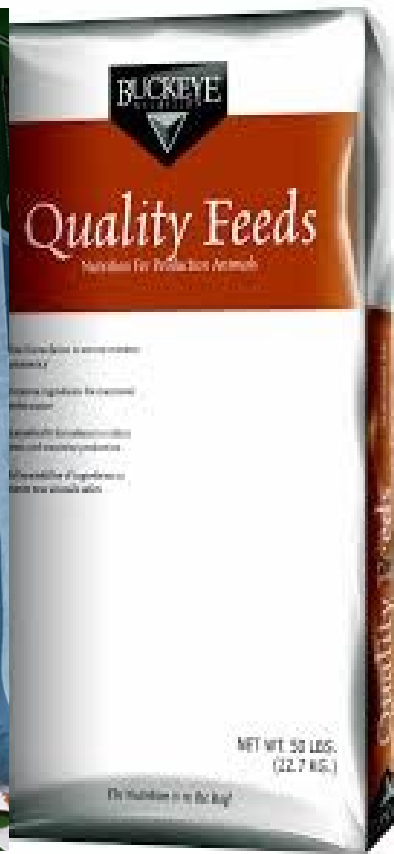
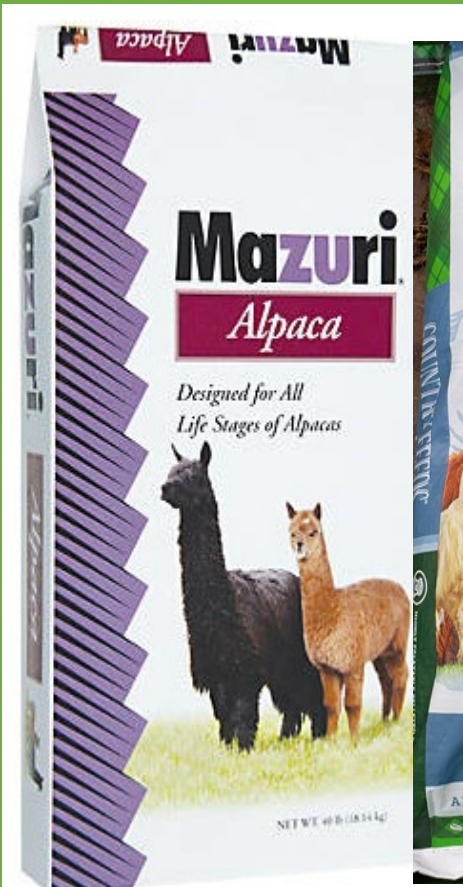
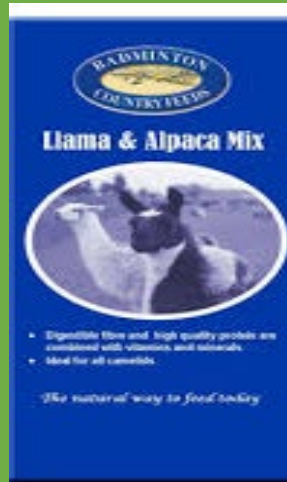
LOT: 1Y20410306

10FEB22

95257 WO 2004
NET WEIGHT 50 LB (22.67 kg)



A Feed Tag is attached to every brand of feed sold



Feed manufacturers must provide specific labeling information on every bag

- **Brand name, and distributor's address**
- **Purpose of the feed (for what animals)**
- **List of any medication or drug ingredients**
- **Guaranteed analysis (nutrients)**
- **Ingredients (listed from most to least amounts)**
- **Feeding directions**
- **Warnings and cautions**
- **Net weight (the actual weight of feed in pounds)**

Feed Tag Activity Questions 1 to 5

- **Page 19, in your Project Book**
- **Take a Feed Tag; staple it to Page 19**
- **Resource Handbook pages 52 and 53**

Product Name

Guaranteed Analysis

3. Crude Protein

4. Ingredients:
Listed highest to lowest volume

Manufacturer/
Distributor



38027

8815P

LLAMA & ALPACA
CONCENTRATE PELLET

Formulated for All Classes of Llama and Alpaca

GUARANTEED ANALYSIS

Crude Protein (Min.).....	15.00%	Zinc (Zn) (Min.).....	600 ppm
Crude Fat (Min.).....	3.00%	Vitamin A (Min.).....	22,000 IU/lb.
Crude Fiber (Max.).....	17.00%	Vitamin D (Min.).....	6,000 IU/lb.
Calcium (Ca) (Min.).....	2.00%	Vitamin E (Min.).....	350 IU/lb.
Calcium (Ca) (Max.).....	2.50%	Iron (Fe) (Min.).....	275 ppm
Phosphorus (P) (Min.).....	1.50%	Cobalt (Co) (Min.).....	2 ppm
Salt (NaCl) (Min.).....	0.70%	Iodine (I) (Min.).....	1.5 ppm
Salt (NaCl) (Max.).....	1.20%	Thiamin (Min.).....	170 mg/lb.
Copper (Cu) (Min.).....	45 ppm	Niacin (Min.).....	1,000 mg/lb.
Selenium (Se) (Min.).....	1.7 ppm		

INGREDIENTS

Soybean Hulls, Heat Processed Soybean Meal, Alfalfa Meal, Corn, Dried Distillers Grains w/Solubles, Dehulled Soybean Meal, Molasses Products, Dicalcium Phosphate, Monocalcium Phosphate, Calcium Carbonate, Salt, Magnesium Oxide, Yeast Culture, Magnesium Sulfate, Potassium Sulfate, Lignin Sulfonate, Vitamin A Supplement, Vitamin E Supplement, Vitamin D Supplement, Niacin, Vitamin B-12 Supplement, Riboflavin, d-Calcium Pantothenate, Ethoxyquin (a preservative), Propionic Acid (a preservative), Menadione Sodium Bisulfite Complex (Source of Vitamin K Activity), Biotin, Folic Acid, Thiamine Mononitrate, Pyridoxine Hydrochloride, Vitamin C, Zinc Sulfate, Ferrous Sulfate, Manganese Sulfate, Copper Sulfate, Ethylenediamine Dihydriodide, Cobalt Sulfate, Zinc Methionine Complex, Zinc Amino Acid Complex, Copper Amino Acid Complex, Manganese Amino Acid Complex, Cobalt Glucoheptonate, Selenium Yeast, Sodium Selenite, and Natural and Artificial Flavoring.

FEEDING DIRECTIONS

For llamas, feed KFI-8815P to at a rate of 1.25 lbs/head daily for maintenance of mature llamas, or 2.0 lbs/head daily for growing, pregnant, or lactating llamas. For alpacas, feed KFI-8815P at a rate of 0.5 lbs/head daily for maintenance of mature alpacas, or 0.75 lbs/head daily for growing, pregnant, or lactating alpacas. Feed along with roughage to meet the nutritional needs of the camelidae.

Net Weight - 50 LBS. (22.7 Kg.) - BULK - Shown on Invoice 217020-261



MANUFACTURED BY:
KALMBACH FEEDS, INC.
UPPER SANDUSKY, OHIO 43351

1. Medication?

Purpose

2. Vitamins

2. Minerals

5. Feeding Directions

Net Weight Statement

**Healthy and
happy alpacas
receive the
correct feed in
the right
amounts**



BODY SCORING ACTIVITY

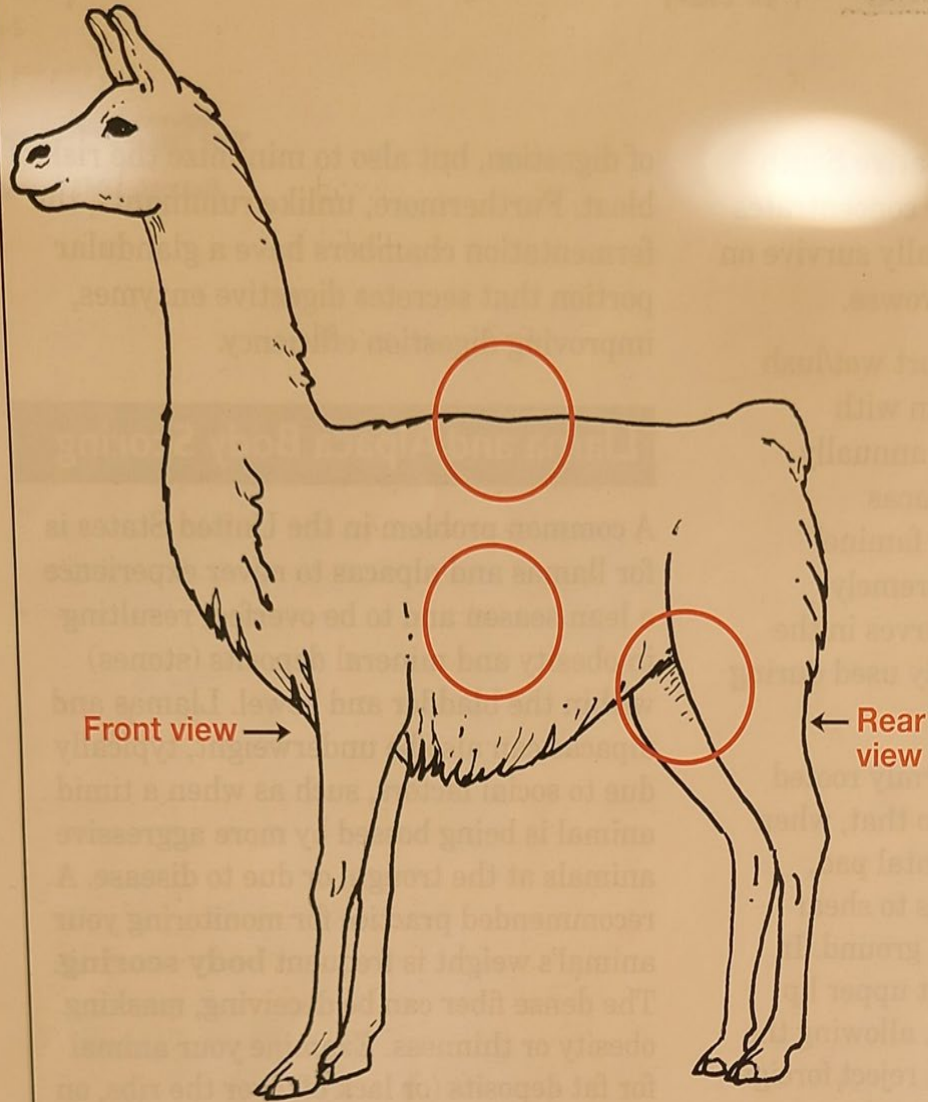
page 49 in Resource Handbook

Visual assessment of the condition of camelids is often misleading, as fiber growth and later stages of pregnancy can hide their true status. They can be too fat or too thin.

Body Scoring gives a more accurate, hands-on assessment of the camelid's condition, for better nutritional management.

Learning how to Body Score your alpaca or llama can be listed as a GOAL, TOPIC of INTEREST, or LEARNING ACTIVITY in your Workbook.

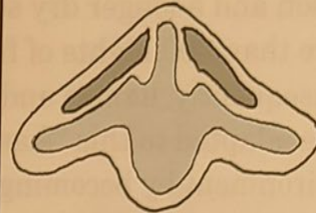
Llama and Alpaca Body Scoring



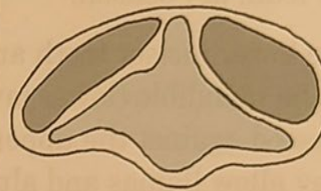
Over the Spine Cross Sections



Very thin



Good condition



Obese

Imagine how it would feel to run your hands over the back of a very thin llama or alpaca, one in good condition, and one that is obese.

Ohio State University Extension.

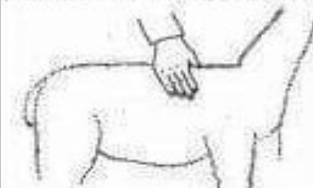
Examine your animal for fat deposits (or lack of) over the ribs, on the flank, between the legs, and over the spine. When examining for fat deposits between the legs, view your animal from the front and from the rear.

Paddock Card - BODY SCORING



Alpaca condition or body scoring, a health check

Quick & simple to do & can easily be done on a regular basis



- ✓ Check the spine as per diagram
 - ✓ Keep a record of each body score
 - ✓ Check the ribs at fibreless area behind elbow
 - ✓ Look at upper rear legs
 - ✓ Feel the chest
 - ✓ Look at front legs and chest
- Score 1 requires vet inspection asap. Score 4 and 5 may require nutritional advice, or just a diet (no extra feed). Beware of sudden changes in BS.

	<h3>1</h3>	<p>EMACIATED</p> <ul style="list-style-type: none"> -very steep angle along spine & curves inward - ribs are very easily felt - hard bony v-shaped chest, sternum extremely boney - very increased space between rear legs - very little muscle & absolutely no fat
	<h3>2</h3>	<p>THIN</p> <ul style="list-style-type: none"> - spinal slope more that 45 degrees - ribs can be easily felt - hard chest with a slight v-shape, very little fat covering sternum - some increased space between rear legs - some loss of muscle
	<h3>3</h3>	<p>OPTIMAL (for adult huacaya)</p> <ul style="list-style-type: none"> - about 45 degree angle along spine - ribs felt with slight pressure - firm muscular chest - chest makes straight line between front legs
	<h3>4</h3>	<p>OVERWEIGHT (for adult huacaya alpaca)</p> <p><i>(ideal for adolescent huacaya alpaca under one year old)</i></p> <ul style="list-style-type: none"> - convex shape between the backbone & upper ribs - ribs felt with some pressure - somewhat rounded soft feeling chest - inner thighs smooth & less defined
	<h3>5</h3>	<p>OBESE (for adult huacaya alpaca)</p> <ul style="list-style-type: none"> - backbone looks flat <i>(normal in suri and cria <6 months)</i> - firm pressure needed to feel ribs - rounded soft feeling chest - large area of contact between rear legs - little or no definition on inner thighs - may have difficulty walking properly