

1<sup>st</sup> Year Llama/Alpaca  
Information Night  
2026





# Project Interview

June 27, 2026

- This is a sit-down interview with a judge where you can show and tell what you have learned this year.
- Dress nicely and make sure to introduce yourself to the judge politely.
- Bring your finished llama/alpaca project book so the judge can look through it and you can talk about how you completed it.
- Bring a poster or some type of project about llamas/alpacas. The poster/project should display something you have learned this year. For example, you could create a poster about the fiber of Suri vs. Huacaya alpacas. This can be linked to your topic of interest or learning goals from your project book.
- The judge will ask you questions about your project book and what you have learned and enjoyed. Make sure you have looked through your project book, so you are ready to answer the judge's questions.
- Speak loudly and clearly. Make eye contact. Have good posture. Interview skills are extremely important, and this is a great chance to practice!



## Introduction

### Topics of Interest

You can complete as many topics of interest as you want, but you must do at least one.

Your topic of interest can be from any of these chapters in the 4-H Llama and Resource Handbook. To keep learning more about llamas and alpacas, choose topics from different chapters each year you complete a llama or alpaca project.

- About Llamas and Alpacas (origin of the species and basic anatomy)
- Uses of Llamas and Alpacas
- Selection
- Health Management Practices and Conditions
- Nutrition
- Reproduction
- Grooming, Shearing, and Showing
- Environmental Concerns
- Training and Packing

Topic of Interest	Date Started	Date Completed
Complete at least one. If necessary, attach additional pages.		
<i>Example: The Camelid family, which includes llamas and alpacas, is a large and diverse group.</i>	3/11/YR	3/11/YR

### Topic of Interest Summary

Use this space to summarize one of the topics of interest you studied. Tell how the information you learned affects the way you manage, train, and care for your llama or alpaca. If you need more space or if you complete more than one topic area, attach additional pages as needed.

new one each year. Remember to record the dates each interest area is started and completed.

Your topic of interest can be from any of these chapters in the 4-H Llama and Resource Handbook. To keep learning more about llamas and alpacas, choose topics from different chapters each year you complete a llama or alpaca project.

- About Llamas and Alpacas (origin of the species and basic anatomy)
- Uses of Llamas and Alpacas
- Selection
- Health Management Practices and Conditions
- Nutrition
- Reproduction
- Grooming, Shearing, and Showing
- Environmental Concerns
- Training and Packing

	Date Started	Date Completed
each additional pages.		
each includes llamas and sp.	3/11/YR	3/31/YR



# Poster Contest



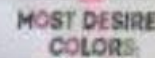
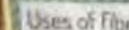
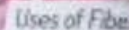
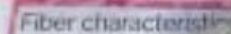
- Posters will be turned in after the barn meeting on the Monday of the fair. Turn in at the info table in the llama/alpaca barn.
- Posters will be judged on educational content (50 pts.), neatness & appearance (30 pts.), and originality (20 pts.).
- Posters must be made using 22" x 28" posterboard, displayed horizontally.
- Each poster must be clearly labeled in the lower right corner, in a space no larger than 3" x 5" with the exhibitor's name, 4-H club, and age as of Jan. 1, 2026.
- Posters will be displayed in the llama/alpaca barn and winners will be announced at the showmanship/obstacles show.
- All poster requirements/guidelines are posted in the fair book and on our club website.



# NUTRITIONAL NEEDS



Int 202



Dr. 102

442



## Predicting Fiber Color in Alpaca Crias!

There are 32 fiber colors recognized for show animals including in alpacas.

**What is a cria?**

To predict the cria's fiber color, you need to look at their parents' and grandparents' fiber colors. You will still be guessing, but it will be based on **GENETICS**.

**Hint:** You'll need to understand a little bit about genetics and color dominance.

To help you understand it better, let's use **LOUT** as an example, using typical card value order: Ace High, then King, then Queen, then Jack.

**Cria Example**

If a cria is **LOUT** a Queen from its dad and an Ace from its mom, which card would be dominant and "show up" or show up?

**Two Deck**

**Four Deck**

**Five Deck**

**Deck 1**

**Deck 2**

**Deck 3**

**Deck 4**

**Deck 5**

**Deck 6**

**Deck 7**

**Deck 8**

**Deck 9**

**Deck 10**

**Deck 11**

**Deck 12**

**Deck 13**

**Deck 14**

**Deck 15**

**Deck 16**

**Deck 17**

**Deck 18**

**Deck 19**

**Deck 20**

**Deck 21**

**Deck 22**

**Deck 23**

**Deck 24**

**Deck 25**

**Deck 26**

**Deck 27**

**Deck 28**

**Deck 29**

**Deck 30**

**Deck 31**

**Deck 32**

**Deck 33**

**Deck 34**

**Deck 35**

**Deck 36**

**Deck 37**

**Deck 38**

**Deck 39**

**Deck 40**

**Deck 41**

**Deck 42**

**Deck 43**

**Deck 44**

**Deck 45**

**Deck 46**

**Deck 47**

**Deck 48**

**Deck 49**

**Deck 50**

**Deck 51**

**Deck 52**

**Deck 53**

**Deck 54**

**Deck 55**

**Deck 56**

**Deck 57**

**Deck 58**

**Deck 59**

**Deck 60**

**Deck 61**

**Deck 62**

**Deck 63**

**Deck 64**

**Deck 65**

**Deck 66**

**Deck 67**

**Deck 68**

**Deck 69**

**Deck 70**

**Deck 71**

**Deck 72**

**Deck 73**

**Deck 74**

**Deck 75**

**Deck 76**

**Deck 77**

**Deck 78**

**Deck 79**

**Deck 80**

**Deck 81**

**Deck 82**

**Deck 83**

**Deck 84**

**Deck 85**

**Deck 86**

**Deck 87**

**Deck 88**

**Deck 89**

**Deck 90**

**Deck 91**

**Deck 92**

**Deck 93**

**Deck 94**

**Deck 95**

**Deck 96**

**Deck 97**

**Deck 98**

**Deck 99**

**Deck 100**

**Deck 101**

**Deck 102**

**Deck 103**

**Deck 104**

**Deck 105**

**Deck 106**

**Deck 107**

**Deck 108**

**Deck 109**

**Deck 110**

**Deck 111**

**Deck 112**

**Deck 113**

**Deck 114**

**Deck 115**

**Deck 116**

**Deck 117**

**Deck 118**

**Deck 119**

**Deck 120**

**Deck 121**

**Deck 122**

**Deck 123**

**Deck 124**

**Deck 125**

**Deck 126**

**Deck 127**

**Deck 128**

**Deck 129**

**Deck 130**

**Deck 131**

**Deck 132**

**Deck 133**

**Deck 134**

**Deck 135**

**Deck 136**

**Deck 137**

**Deck 138**

**Deck 139**

**Deck 140**

**Deck 141**

**Deck 142**

**Deck 143**

**Deck 144**

**Deck 145**

**Deck 146**

**Deck 147**

**Deck 148**

**Deck 149**

**Deck 150**

**Deck 151**

**Deck 152**

**Deck 153**

**Deck 154**

**Deck 155**

**Deck 156**

**Deck 157**

**Deck 158**

**Deck 159**

**Deck 160**

**Deck 161**

**Deck 162**

**Deck 163**

**Deck 164**

**Deck 165**

**Deck 166**

**Deck 167**

**Deck 168**

**Deck 169**

**Deck 170**

**Deck 171**

**Deck 172**

**Deck 173**

**Deck 174**

**Deck 175**

**Deck 176**

**Deck 177**

**Deck 178**

**Deck 179**

**Deck 180**

**Deck 181**

**Deck 182**

**Deck 183**

**Deck 184**

**Deck 185**

**Deck 186**

**Deck 187**

**Deck 188**

**Deck 189**

**Deck 190**

**Deck 191**

**Deck 192**

**Deck 193**

**Deck 194**

**Deck 195**

**Deck 196**

**Deck 197**

**Deck 198**

**Deck 199**

**Deck 200**

**Deck 201**

**Deck 202**

**Deck 203**

**Deck 204**

**Deck 205**

**Deck 206**

**Deck 207**

**Deck 208**

**Deck 209**

**Deck 210**

**Deck 211**

**Deck 212**

**Deck 213**

**Deck 214**

**Deck 215**

**Deck 216**

**Deck 217**

**Deck 218**

**Deck 219**

**Deck 220**

**Deck 221**

**Deck 222**

**Deck 223**

**Deck 224**

**Deck 225**

**Deck 226**

**Deck 227**

**Deck 228**

**Deck 229**

**Deck 230**

**Deck 231**

**Deck 232**

**Deck 233**

**Deck 234**

**Deck 235**

**Deck 236**

**Deck 237**

**Deck 238**

**Deck 239**

**Deck 240**

**Deck 241**

**Deck 242**

**Deck 243**

**Deck 244**

**Deck 245**

**Deck 246**

**Deck 247**

**Deck 248**

**Deck 249**

**Deck 250**

**Deck 251**

**Deck 252**

**Deck 253**

**Deck 254**

**Deck 255**

**Deck 256**

**Deck 257**

**Deck 258**

**Deck 259**

**Deck 260**

**Deck 261**

**Deck 262**

**Deck 263**

**Deck 264**

**Deck 265**

**Deck 266**

**Deck 267**

**Deck 268**

**Deck 269**

**Deck 270**

**Deck 271**

**Deck 272**

**Deck 273**

**Deck 274**

**Deck 275**

**Deck 276**

**Deck 277**

**Deck 278**

**Deck 279**

**Deck 280**

**Deck 281**

**Deck 282**

**Deck 283**

**Deck 284**

**Deck 285**

**Deck 286**

**Deck 287**

**Deck 288**

**Deck 289**

**Deck 290**

**Deck 291**

**Deck 292**

**Deck 293**

**Deck 294**

**Deck 295**

**Deck 296**

**Deck 297**

**Deck 298**

**Deck 299**

**Deck 300**

**Deck 301**

**Deck 302**

**Deck 303**

**Deck 304**

**Deck 305**

**Deck 306**

**Deck 307**

**Deck 308**

**Deck 309**

**Deck 310**

**Deck 311**

**Deck 312**

**Deck 313**

**Deck 314**

**Deck 315**

**Deck 316**

**Deck 317**

**Deck 318**

**Deck 319**

**Deck 320**

**Deck 321**

**Deck 322**

**Deck 323**

**Deck 324**

**Deck 325**

**Deck 326**

**Deck 327**

**Deck 328**

**Deck 329**

**Deck 330**

**Deck 331**

**Deck 332**

**Deck 333**

**Deck 334**

**Deck 335**

**Deck 336**

**Deck 337**

**Deck 338**

**Deck 339**

**Deck 340**

**Deck 341**

**Deck 342**

**Deck 343**

**Deck 344**

**Deck 345**

**Deck 346**

**Deck 347**

**Deck 348**

**Deck 349**

**Deck 350**

**Deck 351**

**Deck 352**

**Deck 353**

**Deck 354**

**Deck 355**

**Deck 356**

**Deck 357**

**Deck 358**

**Deck 359**

**Deck 360**

**Deck 361**

**Deck 362**

**Deck 363**

**Deck 364**

**Deck 365**

**Deck 366**

**Deck 367**

**Deck 368**

**Deck 369**

**Deck 370**

**Deck 371**

**Deck 372**

**Deck 373**

**Deck 374**

**Deck 375**

**Deck 376**

**Deck 377**

**Deck 378**

**Deck 379**

**Deck 380**

**Deck 381**

**Deck 382**

**Deck 383**

**Deck 384**

**Deck 385**

**Deck 386**

**Deck 387**

**Deck 388**

**Deck 389**

**Deck 390**

**Deck 391**

**Deck 392**

**Deck 393**

**Deck 394**

**Deck 395**

**Deck 396**

**Deck 397**

**Deck 398**

**Deck 399**

**Deck 400**

**Deck 401**

**Deck 402**

**Deck 403**

**Deck 404**

**Deck 405**

**Deck 406**

**Deck 407**

**Deck 408**

**Deck 409**

**Deck 410**

**Deck 411**

**Deck 412**

**Deck 413**

**Deck 414**

**Deck 415**

**Deck 416**

**Deck 417**

**Deck 418**

**Deck 419**

**Deck 420**

**Deck 421**

**Deck 422**

**Deck 423**

**Deck 424**

**Deck 425**

**Deck 426**

**Deck 427**

**Deck 428**

**Deck 429**

**Deck 430**

**Deck 431**

**Deck 432**

**Deck 433**

**Deck 434**

**Deck 435**

**Deck 436**

**Deck 437**

**Deck 438**

**Deck 439**

**Deck 440**

**Deck 441**

**Deck 442**

**Deck 443**

**Deck 444**

**Deck 445**

**Deck 446**

**Deck 447**

**Deck 448**

**Deck 449**

**Deck 450**

**Deck 451**

**Deck 452**

**Deck 453**

**Deck 454**

**Deck 455**

**Deck 456**

**Deck 457**

**Deck 458**

**Deck 459**

**Deck 460**

**Deck 461**

**Deck 462**

**Deck 463**

**Deck 464**

**Deck 465**

**Deck 466**

**Deck 467**

**Deck 468**

**Deck 469**

**Deck 470**

**Deck 471**

**Deck 472**

**Deck 473**

**Deck 474**

**Deck 475**

**Deck 476**

**Deck 477**

**Deck 478**

**Deck 479**

**Deck 480**

**Deck 481**

**Deck 482**

**Deck 483**

**Deck 484**

**Deck 485**

**Deck 486**

**Deck 487**

**Deck 488**

**Deck 489**

**Deck 490**

**Deck 491**

**Deck 492**

**Deck 493**

**Deck 494**

**Deck 495**

**Deck 496**

**Deck 497**

**Deck 498**

**Deck 499**

**Deck 500**

**Deck 501**

**Deck 502**

**Deck 503**

**Deck 504**

**Deck 505**

**Deck 506**

**Deck 507**

**Deck 508**

**Deck 509**

**Deck 510**

**Deck 511**

**Deck 512**

**Deck 513**

**Deck 514**

**Deck 515**

**Deck 516**

**Deck 517**

**Deck 518**

**Deck 519**

**Deck 520**

**Deck 521**

**Deck 522**

**Deck 523**

**Deck 524**

**Deck 525**

**Deck 526**

**Deck 527**

**Deck 528**

**Deck 529**

**Deck 530**

**Deck 531**

**Deck 532**

**Deck 533**

**Deck 534**

**Deck 535**

**Deck 536**

**Deck 537**

**Deck 538**

**Deck 539**

**Deck 540**

**Deck 541**

**Deck 542**

**Deck 543**

**Deck 544**

**Deck 545**

**Deck 546**

**Deck 547**

**Deck 548**

**Deck 549**

**Deck 550**

**Deck 551**

**Deck 552**

**Deck 553**

**Deck 554**

**Deck 555**

**Deck 556**

**Deck 557**

**Deck 558**

**Deck 559**

**Deck 560**

**Deck 561**

**Deck 562**

**Deck 563**

**Deck 564**

**Deck 565**

**Deck 566**

**Deck 567**

**Deck 568**

**Deck 569**

**Deck 570**

**Deck 571**

**Deck 572**

**Deck 573**

**Deck 574**

**Deck 575**

**Deck 576**

**Deck 577**

**Deck 578**

**Deck 579**

**Deck 580**

**Deck 581**

**Deck 582**

**Deck 583**

**Deck 584**

**Deck 585**

**Deck 586**

**Deck 587**

**Deck 588**

**Deck 589**

**Deck 590**

**Deck 591**

**Deck 592**

**Deck 593**

**Deck 594**

**Deck 595**

**Deck 596**

**Deck 597**

**Deck 598**

**Deck 599**

**Deck 600**

**Deck 601**

**Deck 602**

**Deck 603**

**Deck 604**

**Deck 605**

**Deck 606**

**Deck 607**

**Deck 608**

**Deck 609**

**Deck 610**

**Deck 611**

**Deck 612**

**Deck 613**

**Deck 614**

**Deck 615**

**Deck 616**

**Deck 617**

**Deck 618**

**Deck 619**

**Deck 620**

**Deck 621**

**Deck 622**

**Deck 623**

**Deck 624**

**Deck 625**

**Deck 626**

**Deck 627**

**Deck 628**

**Deck 629**

**Deck 630**

**Deck 631**

**Deck 632**

**Deck 633**

**Deck 634**

**Deck 635**

**Deck 636**

**Deck 637**

**Deck 638**

**Deck 639**

**Deck 640**

**Deck 641**

**Deck 642**

**Deck 643**

**Deck 644**

**Deck 645**

**Deck 646**

**Deck 647**

**Deck 648**

**Deck 649**

**Deck 650**

**Deck 651**

**Deck 652**

**Deck 653**

**Deck 654**

**Deck 655**

**Deck 656**

**Deck 657**

**Deck 658**

**Deck 659**

**Deck 660**

**Deck 661**

**Deck 662**

**Deck 663**

**Deck 664**

**Deck 665**

**Deck 666**

**Deck 667**

**Deck 668**

**Deck 669**

**Deck 670**

**Deck 671**

**Deck 672**

**Deck 673**

**Deck 674**

**Deck 675**

**Deck 676**

**Deck 677**

**Deck 678**

**Deck 679**

**Deck 680**

**Deck 681**

**Deck 682**

**Deck 683**

**Deck 684**

**Deck 685**

**Deck 686**

**Deck 687**

**Deck 688**

**Deck 689**

**Deck 690**

**Deck 691**

**Deck 692**

**Deck 693**

**Deck 694**

**Deck 695**

**Deck 696**

**Deck 697**

**Deck 698**

**Deck 699**

**Deck 700**

**Deck 701**

**Deck 702**

**Deck 703**

**Deck 704**

**Deck 705**

**Deck 706**

**Deck 707**

**Deck 708**

**Deck 709**

**Deck 710**

**Deck 711**

**Deck 712**

**Deck 713**

**Deck 714**

**Deck 715**

**Deck 716**

**Deck 717**

**Deck 718**

**Deck 719**

**Deck 720**

**Deck 721**

**Deck 722**

**Deck 723**

**Deck 724**

**Deck 725**

**Deck 726**

**Deck 727**

**Deck 728**

**Deck 729**

**Deck 730**

**Deck 731**

**Deck 732**

**Deck 733**

**Deck 734**

**Deck 735**

**Deck 736**

**Deck 737**

**Deck 738**

**Deck 739**

**Deck 740**

**Deck 741**

**Deck 742**

**Deck 743**

**Deck 744**

**Deck 745**

**Deck 746**

**Deck 747**

**Deck 748**

**Deck 749**

**Deck 750**

**Deck 751**

**Deck 752**

**Deck 753**

**Deck 754**

**Deck 755**

**Deck 756**

**Deck 757**

**Deck 758**

**Deck 759**

**Deck 760**

**Deck 761**

**Deck 762**

**Deck 763**

**Deck 764**

**Deck 765**

**Deck 766**

**Deck 767**

**Deck 768**

**Deck 769**

**Deck 770**

**Deck 771**

**Deck 772**

**Deck 773**

**Deck 774**

**Deck 775**

**Deck 776**

**Deck 777**

**Deck 778**

**Deck 779**

**Deck 780**

**Deck 781**

**Deck 782**

**Deck 783**

**Deck 784**

**Deck 785**

**Deck 786**

**Deck 787**

**Deck 788**

**Deck 789**

**Deck 790**

**Deck 791**

**Deck 792**

**Deck 793**

**Deck 794**

**Deck 795**

**Deck 796**

**Deck 797**

**Deck 798**

**Deck 799**

**Deck 800**

**Deck 801**

**Deck 802**

**Deck 803**

**Deck 804**

**Deck 805**

**Deck 806**

**Deck 807**

**Deck 808**

**Deck 809**

**Deck 810**

**Deck 811**

**Deck 812**

**Deck 813**

**Deck 814**



# FAIR EVENTS AND TIPS





# EVENTS/SHOWING

## SHOWMANSHIP-

What happens during showing?

- When entering the arena stay on the left side of your animal.
- Keep good eye contact with the judge. Show the judge you are paying attention and are focused.
- The judge will have you walk your animal around the arena. Eventually, the judge will have you line up with your animal.
- When lined up with your animal make sure that you keep eye contact and stand to the side of your animal almost at a 45-degree angle. (Quadrants)
- At all times you want to make sure that your animal is in between you and the judge.
- The judge might come up to you ask you questions about your animal like is your alpaca a Huacaya or Suri. Sometimes they might ask you about the body parts or other alpaca facts. (If they ask about body parts don't point to a body part. Ex: Where is the Loin? Answer to give: Loin is between croup and back.)



# In resource book page 73-76

## Quadrants with Positions of Judge and Handler

When judge is here or...

1. Left front quarter
2. Right front quarter
3. Left hind quarter
4. Right back quarter

...when judge is here,  
handler is here.

When judge is here or...

1. Left front quarter
2. Right front quarter
3. Left hind quarter
4. Right back quarter

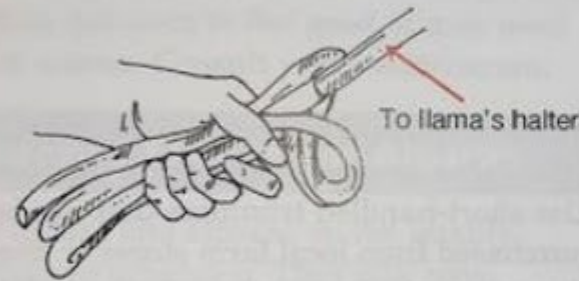
...when judge is here,  
handler is here.

1. Left front quarter
2. Right front quarter
3. Left hind quarter
4. Right back quarter

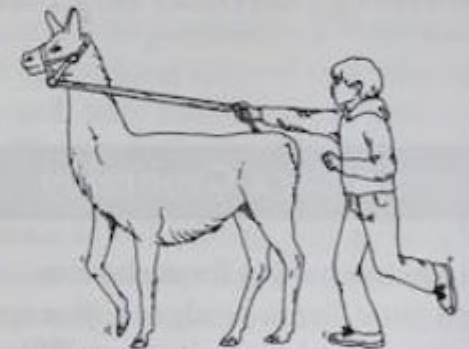
When judge is here,  
handler is here.

## In resource book page 69-70

## Handling the Lead Rope



Correct: The rope is held in a loose coil in one hand, while the other is free to hold or move the llama. The rope can be dropped in an emergency. Hold the lead rope in one hand approximately two or three feet from the llama's halter.



Incorrect: The rope is wrapped tightly around one hand and cannot be easily dropped. The llama can get in front of the person, and when this happens, the animal is difficult to control.

# SHOWING CLOTHES

- Wear a white long sleeve shirt with black long pants. You can also wear short sleeve club polo shirt.
- Wear closed-toe shoes. They can be boots or a black pair of shoes.



# SHOWMANSHIP VIDEO







# EVENTS/SHOWING

## OBSTACLES

- There will be a course of obstacles for you and your animal to go through. You will be familiar with some of the obstacles, but some of them will be new.
- The judge will follow you as you complete each obstacle.
- There will be a time limit to complete all obstacles. You may try an obstacle more than once, but when the time limit is reached, you will not be able to attempt any more obstacles.
- Partial points will be given even if the obstacle is not completed perfectly.





OBSTACLES USED  
INCLUDE:



Ladder



Streamers



Tire



Bucket



Tarp



# EVENTS/SHOWING

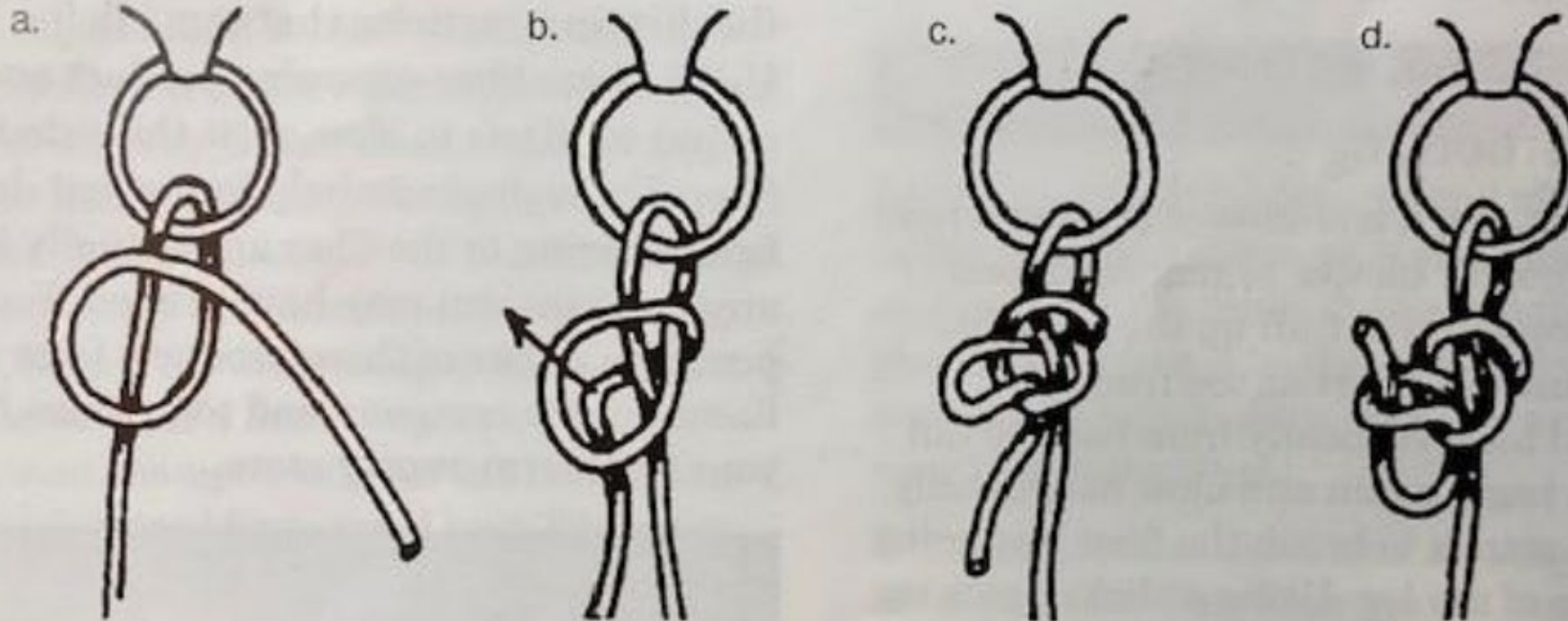
## Public Relations

- Public relations shows how well you and your animal handle public situations.
- There will be a combination of obstacles and questions/scenarios presented by a judge.
- Possible questions include “What are alpacas/llamas used for?” or “Demonstrate how to tie a quick release knot.” Hint... look in your resource book. 😊

# In resource book pages 69-70

## Quick Release Knot

Often used when an animal will be tied for a brief time, the quick release knot can be quickly untied. It remains stable, but the knot gets tighter if the animal pulls on it. It is not as reliable for long term use as the bowline. To untie knot, pull end back out of loop, and keep pulling. Knot will swiftly unravel.



- a. Pass rope through ring or around a post. Make a loop in the free end of the rope, and place it over the standing part.
- b. Pass the free end behind both the standing part of the rope and the loop. Push a "bight" or loop through the first loop.

- c. Pull on loop to tighten the knot.
- d. To keep the animal from pulling on the free end of the rope and untying the knot, pass the end through the loop.

# FUN SHOW

## Costumes and Surprise Fun Event

- You and your animal will dress up in coordinating costumes. You will write a short story about your costumes that will be read while you walk around the show ring.
- Costumes are judged on creativity and animal coverage. The more of your animal that is covered, the better.
- After the costume class, there is a fun event such as the limbo, tunnel race, etc.
- Try draping a towel over your alpaca during spring training sessions to get it used to the feel of a costume.

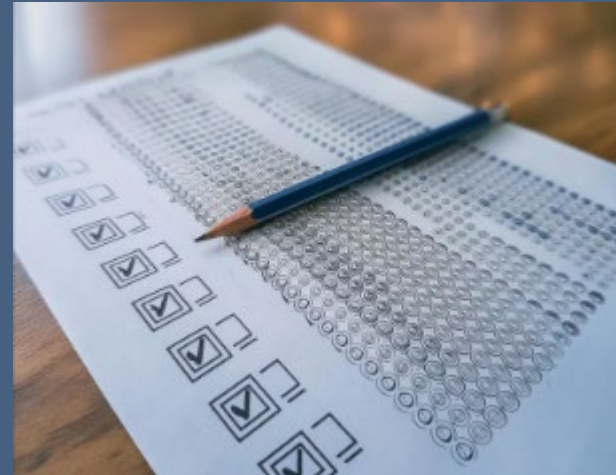






# Skillathon

- Tests your knowledge about alpacas/llamas.
- Study the Resource Book!
- Don't forget to study alpaca/llama body parts



# Premier Exhibitor

The Premier Exhibitor Award combines the scores of Public Relations, Obstacles, Skillathon, Showmanship, and Interviews to select and overall top alpaca/llama exhibitor.

The top 5 finalists are announced Thursday and the winner is announced at the Showman of Showmen Contest on Friday night of the fair.



# How to Sign Up for Fair Events

- \* Online Fair Registration Begins in May and must be completed by the deadline – usually mid June.
- \* You will sign up for the fair events you want participate in
- \* We recommend you sign up for ALL the events. You can backout of events at the fair, but you cannot add events.



# FAIR RESPONSIBILITIES

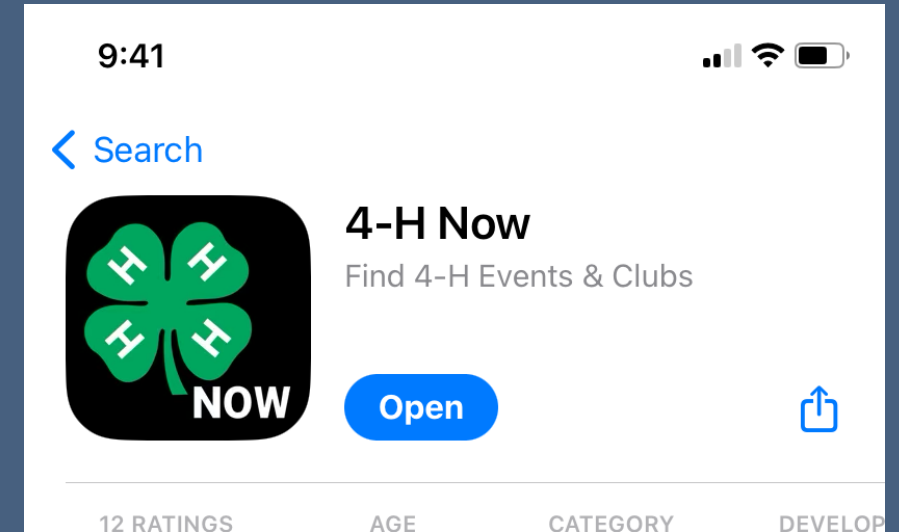


- Get your alpacas out of their pens during the day. You want to get your alpacas out to walk and also let them get used to the new surroundings and environment.
- Clean up around you and the barn. Make sure that the barn is clean by sweeping the floors from hay and other messes.
- Make sure you clean up after your animal. Keep your animal stalls clean as well as giving your animal fresh water.
- Barn sitting. Sign up for a shift to barn sit. You watch the animals and keep the barn kept clean. You can inform the public about alpacas and answer questions the public might have.



# 4-H Now App

- Fair Book for all projects
- Fair Schedule
- Quick links to important 4-H info  
(camp info, fair entry, project central)





# Fair Passes

Youth 4-H members and Cloverbuds will receive a fair wristband which allows entrance into the fair for the week. It does not include Rides.

Sponsors or the Camelid Club pays the \$10 fee for wristbands for Primary Members. These wristbands can be picked up at the fairgrounds the weekend before the fair.

Weekly fair passes can be purchased at the Fair Office for parents, siblings, etc. They usually cost around \$35-\$40.

There is no charge for parking, however, Preferred Parking can be purchased. Preferred Parking will give you an assigned parking spot for the week closer to the barns.

# Need Help???

Just ask! There are lots  
of 4-Hers and parents  
who would love to help!.

